

Absolute
AIR FANS

QUICK INSTALLATION GUIDE

Envira-North Systems Ltd.
139 Sparling St. PO Box 668
Seaforth, Ontario N0K 1W0 Canada
Phone: 1-519-527-2198 or 1-866-771-7766
Email: bigair@enviranorth.com
Website: enviranorth.com

Please follow all warning guidelines, failure to do so could result in serious injury or death.
Assembly/Installation of the fan should be carried out by qualified professionals.

During transportation parts on the fan may become loose and need to be checked during and after installation.

- Ensure all hardware is tight and secure
- Ensure alignment of pulleys is correct Ensure proper belt tension is maintained
- **DANGER: Electrical Hazard**

Disconnect electrical power before installing, inspecting or servicing equipment. All electrical wiring must be done by a qualified electrician in accordance with all Local and National electrical and safety codes, as well as the National Fire Protection Agency (NFPA) where applicable.

General Safety Information

⚠ WARNING *Disconnect power supply before wiring connections are made to prevent possible electric shock or damage to equipment.*

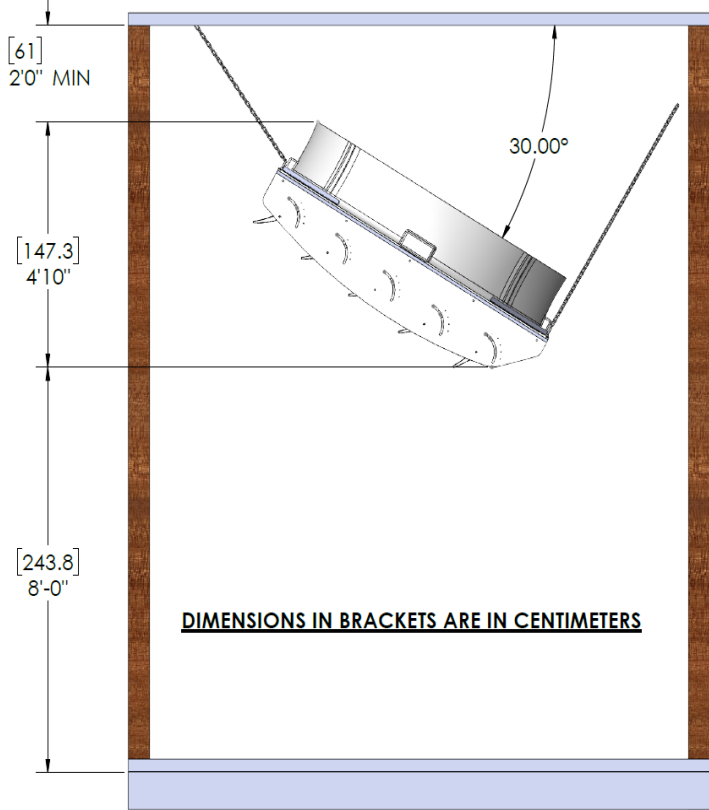
⚠ WARNING *Read and follow instructions carefully. Failure to comply with instructions could result in fire, electric shock, injury to persons and/or damage to equipment.*

⚠ CAUTION *Follow all maintenance procedures enclosed.*

⚠ DANGER *Failure to properly ground unit could result in severe electrical shock or death.*

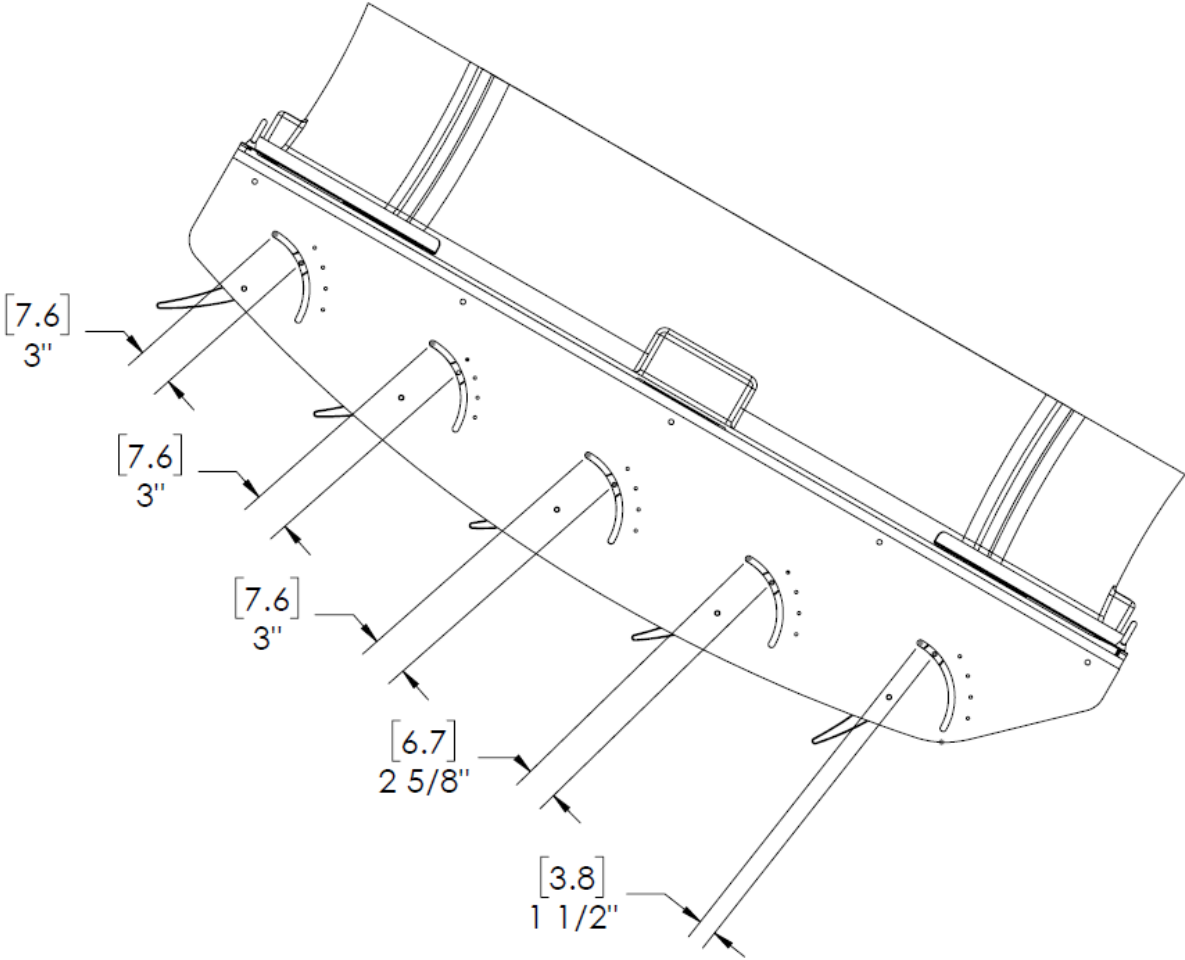
INSTALLATION:

- Use extreme care when unpacking fan
- Be sure supports-anchor points are capable of holding weight of the unit (460 lbs. total)
- Fan should be mounted at 30 degree angle for optimal performance
- **A minimum of 8 feet is required from the floor/stall bed to any parts on the fan, also consider machinery that could damage fan (adjustments of height may need to change accordingly)**
- A telehandler or fork lift is recommended for ease of install
- Chain and Quick links are recommended for hanging (Length of chains will be dependent on roof pitch, height of building, location of fan install etc.)
- **Mount louver hanger side plates and louvers after fan is raised to position** (See drawing with hardware pack)



**RECOMMENDED MOUNTING WILL GIVE
BEST PERFORMANCE FOR 60' AIR PATTERN.
IF YOUR SITUATION REQUIRES
ADJUSTMENTS PLEASE CONTACT YOUR LOCAL
VES DEALER FOR BEST SOLUTIONS.**

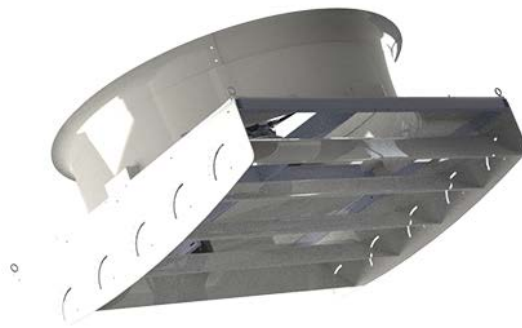
- **Please see general guideline for placement of deflectors, some adjustment may be required dependent on your particular install**



MOTOR WIRING:

All Electrical work must be completed by a licensed electrician in accordance with all Local and National electrical and safety codes, as well as the National Fire Protection Agency (NFPA) where applicable. Check and make sure all electrical power supplied to the motor is disconnected prior to completing any work on the fan.

1. Ensure that power to be supplied to the motor matches what is specified on the motor name plate.
2. Remove the motor access cover and follow wiring diagram located on the motor name plate or on the inside of the motor access cover. If the motor is dual voltage please follow the wiring instructions that associate to the power to be supplied to the motor.
3. If a VFD is being used we recommend that a VFD rated motor cable be used to reduce noise related issues. Only ground the shield on the VFD side to eliminate a ground loop.
4. Please form a drip loop before entering the VFD (If used)/motor to eliminate potential damage from moisture.



Absolute
AIR FANS

Envira-North Systems Ltd.
139 Sparling St. PO Box 668
Seaforth, Ontario N0K 1W0 Canada
Phone: 1-519-527-2198 or 1-866-771-7766
Email: bigair@enviranorth.com
Website: enviranorth.com